

# Retro Ho Ho

RENÉE NANNEMAN

**a**  
100  
*years*



Ho Ho Ho! Quilt designed  
by: **Renée Nanneman**  
Quilt Size: **70" x 94"**  
Skill Level: **Experienced**

BACKING

andover



makower uk

Free Pattern Download Available  
1384 Broadway, 24TH Floor, New York, NY 10018  
Tel. (800) 223-5678 • [andoverfabrics.com](http://andoverfabrics.com)

9/15/22

# Ho Ho Ho! Quilt

Introducing Andover Fabrics new collection:

RETRO HO HO by Renée Nanneman. Quilt designed by Renée Nanneman.

Quilt finishes 70" x 94" 20 Nine Patch Blocks: 6"  
32 Snowball Blocks: 5" 20 Star Blocks: 6"

*Jolly Ole St. Nick will bring smiles and cheer to your holiday decoration when he graces your wall or bed. The sampler of blocks in fun Christmassy prints frames the printed panel so that Santa is the focus.*

## Cutting Directions

**Note:** Read assembly directions before cutting patches. All measurements are cut sizes and include 1/4" seam allowances. A fat 1/4 is an 18" x 20"-22" cut. Borders are cut the exact lengths required plus 1/4" seam allowances. WOF designates the width of fabric from selvedge to selvedge (approximately 43" wide).

### Cutting for ONE block W (Snowball)

Center fabric: Cut (1) square 5 1/2"  
Fabric E: Cut (4) squares 1 3/4"

### Cutting for ONE block X (Nine Patch)

Fabric 1: Cut (5) squares 2 1/2"  
Fabric 2: Cut (4) squares 2 1/2"

### Cutting for ONE block Y or Z (Blue or Black Stars)

Fabric F or Black: Cut (4) squares 2 1/2"  
Fabric F or Black: Cut (1) square 3 1/4", cut in half diagonally twice to make 4 quarter-square triangles  
Sm. Star Point: Cut (1) square 3 1/4", cut in half diagonally twice to make 4 quarter-square triangles  
Lg. Star Point: Cut (2) squares 2 7/8", cut in half diagonally to make 4 half-square triangles  
Center Fabric: Cut (1) square 2 1/2"

## Cutting for Quilt

### Fabric A

Fussy-cut (1) panel 23" x 43 1/2" (Read Step 1 before cutting)

### Fabric B

Cut (2) side borders 8 1/2" x 78 1/2", cut lengthwise for outer border  
Cut (2) top-bottom borders 8 1/2" x 70 1/2"

### Fabric C

Cut (2) side borders 3 1/2" x 45", cut crosswise for inner border  
Cut (2) t/b borders 4 1/2" x 30"

### Fabric D

Cut (2) side borders 2 1/2" x 60 1/2", cut crosswise and pieced for middle border  
Cut (2) t/b borders 3 1/2" x 42 1/2"

## Fabric Requirements

		Yardage	Red	Green
<b>Fabric A</b>	center	1 panel	571-C	571-G
<b>Fabric B</b>	border	2 1/4 yards	575-R	575-G
<b>Fabric C</b>	border	1/2 yard	576-R	576-R
<b>Fabric D</b>	border	3/4 yard	581-G	581-G
<b>Fabric E</b>	blocks	1/2 yard	581-R	581-R
<b>Fabric F</b>	sashes	1/2 yard	583-B	583-B
<b>2 Black</b>	blocks	fat 1/4 ea. 573-C 583-C		
<b>18 prints</b>	blocks	fat 1/4 ea. 572-E 572-R 573-L 574-B 574-C 575-C 576-G 577-C 577-E 578-C 578-G 579-B 579-G 579-R 580-G 580-L 582-G 582-R		
<b>Binding</b>		3/4 yard	582-G	582-G
<b>Backing</b>		7 yards	579-R	579-G

### Fabric E

Cut (128) squares 1 3/4" for Block W corners

### Fabric F

Cut (32) sashes 1" x 5 1/2"  
Cut (10) squares 3 1/4", cut each in half diagonally twice to make 4 quarter-square triangles for Block Y  
Cut (40) squares 2 1/2" for Block Y

### 2 Black From each:

Cut (10) squares 3 1/4", cut each in half diagonally twice to make 4 quarter-square triangles for Block Z  
Cut (40) squares 2 1/2" for Block Z

### 18 Prints From each:

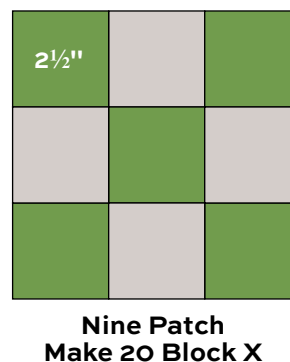
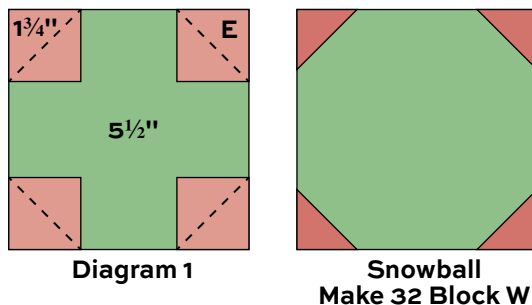
Cut (1 or 2) squares 5 1/2". You need 32 squares total for Block W center.  
Cut (2) squares 2 7/8" from 16 prints; cut 4 squares from 2 prints. You need 40 squares total. Cut each in half diagonally to make 2 half-square triangles for Blocks Y and Z.  
Cut (1) square 3 1/4" from 16 prints; cut 2 squares from 2 prints. You need 20 squares total. Cut each in half diagonally twice to make 4 quarter-square triangles for Y and Z.  
Cut 2 1/2" squares in groups of 4 or 5. You need 180 squares total for Block X.  
Cut (1) square 2 1/2" from 16 prints; cut 2 squares from 2 prints. You need 20 squares total for Block Y and Z centers.

**Binding** Cut (9) strips 2 1/2" x WOF for binding

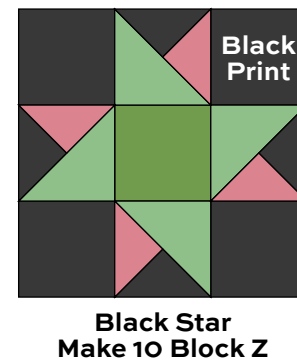
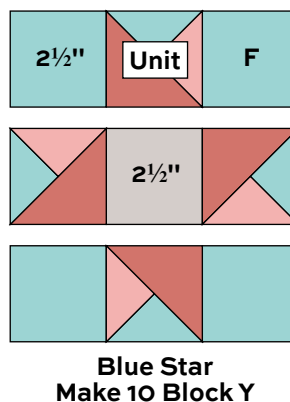
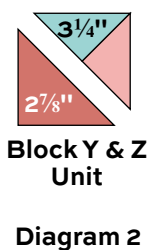
**Backing** Cut (3) lengths 35" x 80", pieced to fit quilt top with overlap on all sides

## Making the Quilt

1. Fussy-cut the panel to leave  $\frac{1}{4}$ " seam allowance all around the printed motifs. The measurement of the panel is not critical because you will add the oversized Fabric C borders to all sides, and then trim to the correct size.
2. Sew long Fabric C borders to the sides of the panel. Trim the ends of the borders even with the top and bottom raw edges of the panel. Sew short Fabric C borders to the top and bottom. Trim the quilt to  $28\frac{1}{2}$ " wide by  $50\frac{1}{2}$ " long, leaving even-width borders on the sides, and even-width borders at the top and bottom. The side borders may or may not be the same width as top/bottom borders.
3. Block W is made with a quick stitch-and-flip method. Draw a diagonal line on the Fabric E squares. Position a marked square on one corner of a scrappy  $5\frac{1}{2}$ " square (Diagram 1). Stitch on the marked diagonal line. Cut away the excess fabric. Press the corner up. Repeat this step on all 4 corners. The block should measure  $5\frac{1}{2}$ ". Make 32 Block W.



4. Referring to the Block X diagram, join 5 squares with 4 other squares to make a block. The block should measure  $6\frac{1}{2}$ " square. Make 20 Block X.
5. Cut the fabrics needed for 1 Block Y as listed above. Refer to Diagram 2. Join a Fabric F and a different print quarter-square triangle to make a corner. Sew a  $2\frac{7}{8}$ " half-square triangle to the pieced part to make a Block Y Unit. It should measure  $2\frac{1}{2}$ " square. Make 4 units alike for the block. Arrange and join 4 Units, 4 Fabric F  $2\frac{1}{2}$ " squares, and a center  $2\frac{1}{2}$ " square to make Block Y. It should measure  $6\frac{1}{2}$ " square. Make 10 block Y.

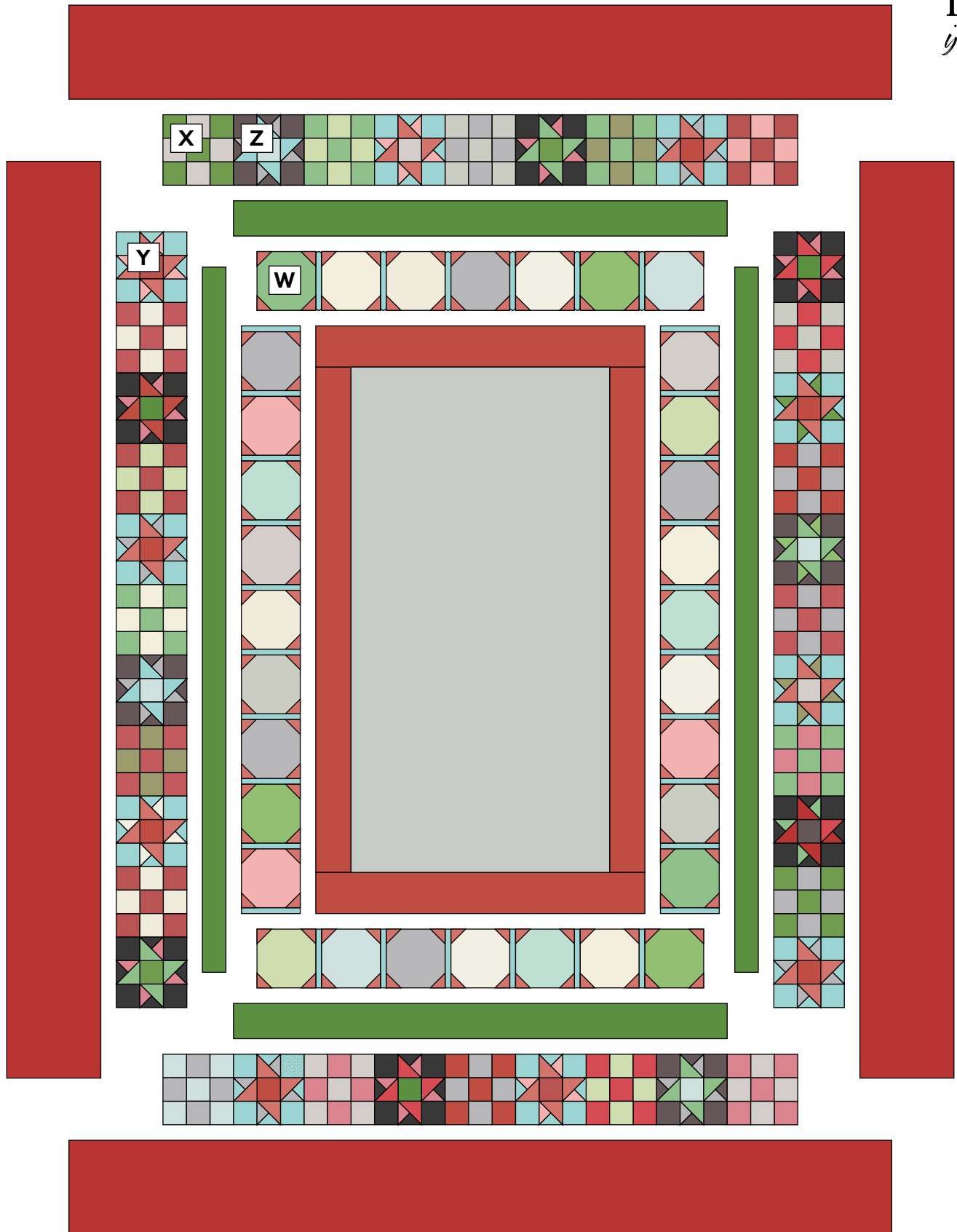


6. Likewise, make 4 Block Z Units for each Block Z using the black print in place of Fabric F patches. The block should measure  $6\frac{1}{2}$ " square. Make 10 Block Z.
7. Refer to the Quilt Diagram. Using a large flat surface or design wall, arrange the W Blocks around the center panel from Step 2, making sure that the prints are distributed so fabrics do not touch themselves. Position a Fabric F sash between each block and at the ends of the side borders. Join the W Blocks and sashes to make 4 borders. Sew the longer borders to the sides and the shorter borders to the top and bottom.
8. Sew Fabric D borders to the quilt.

9. Arrange Blocks X, Y, and Z around the quilt, again checking that no print touches itself. Note that Block X alternates with Blocks Y and Z. Once you are satisfied with the arrangement, join the blocks into 4 borders. Sew longer borders to the sides and shorter borders to the top and bottom.
10. Sew Fabric B borders to the quilt.

## Finishing the Quilt

11. Layer the quilt with batting and backing and baste. Quilt in the ditch around borders and patches. Quilt around the printed motifs in the center panel and elsewhere as desired. Bind to finish the quilt.



Quilt Diagram

# Retro Ho Ho

RENÉE NANNEMAN



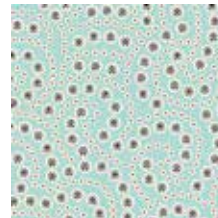
571-C\*



571-G



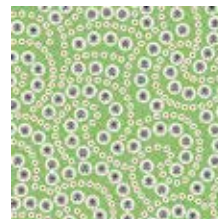
575-C\*



579-B\*



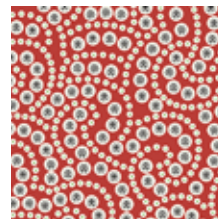
575-G\*



579-G\*



575-R\*



579-R\*



572-E\*



572-R\*



573-C\*



573-L\*



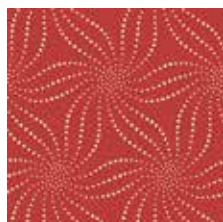
574-B\*



574-C\*



576-G\*



576-R\*



577-C\*



577-E\*



578-C\*



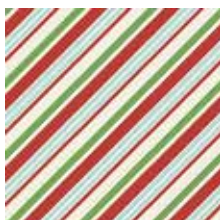
578-G\*



581-G\*



581-R\*



582-G\*



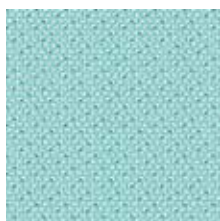
582-R\*



580-G\*



580-L\*



583-B\*



583-C\*

\*Indicates fabrics used in featured quilt pattern.

Panel shown at 10%, all other fabrics shown are 25% of actual size.

Free Pattern Download Available

1384 Broadway New York, NY 10018  
Tel. (800) 223-5678 • [andoverfabrics.com](http://andoverfabrics.com)

andover • [makoweruk](http://makoweruk.com)